

First Nations COVID-19 testing in Ontario: Weekly report 83

Coronavirus Disease (COVID-19) Testing in Registered First Nations People in Ontario**

WEEKLY UPDATE

Tuesday, November 16, 2021 (covering tests completed November 8, 2021 to November 14, 2021; vaccinations between November 2, 2021 to November 8, 2021)

N=561				
Number and % of people in the group who were newly tested for COVID-19				
184 (0.38%) in a First Nations community***		377 (0.37%) outside of a First Nations community		
N=111				
Number and % of people in the group newly tested who were positive for COVID-19				
38 (0.14%) in a First Nations community***		73 (0.15%) outside of a First Nations community		
N=1,287				
Number and % of people in the group newly fully vaccinated for COVID-19 (2 doses, 12 yrs +)				
464 (1.00%) in a First Nations community***		823 (0.82%) outside of a First Nations community		
NUMBERS TO DATE (covering tests completed January 15, 2020 to November 14, 2021; vaccinations between December 15, 2020 to November 8, 2021)				
N=75,207				
Number and % of people in the group who were tested TO DATE for COVID-19				
26,538 (54.6%) in a First Nations community***		48,669 (47.2%) outside of a First Nations community		
N=5,746				
Number and % of people tested in the group TO DATE who were positive for COVID-19				
1,992 (7.5%) in a First Nations community***		3,754 (7.7%) outside of a First Nations community		
N=97,744				
Number and % of people in the group who were fully vaccinated for COVID-19 (2 doses, 12 yrs +) TO DATE				
30,857 (66.8%) in a First Nations community***		66,887 (66.9%) outside of a First Nations community		
Key geographic areas (See appendix)	Tested	Positive cases	Fully vaccinated	FN population
North West	21,733 (56.4%)	1,328 (6.1%)	25,049 (68.5%)	38,546
North East	17,311 (49.8%)	1,079 (6.2%)	23,000 (68.8%)	34,789
Southwest	19,191 (46.9%)	2,211 (11.5%)	25,515 (64.6%)	40,955
Southeast	9,354 (43.0%)	571 (6.1%)	13,729 (64.8%)	21,755
Central	7,463 (49.3%)	539 (7.2%)	10,371 (70.2%)	15,126
* suppressed for privacy. ** 151,830 Registered First Nations people in Ontario with a health card, *** based on the residence on the Health Card files.				

Data source: Characteristics of COVID-19 diagnostic test recipients among the Ontario First Nations population, ICES. As of July 18, 2020, the data sources for test volumes and results expanded beyond the original Ontario Laboratory Information System to include data from the Public Health Information System (IPHIS), Distributed Labs (DL), and Public Health Ontario Laboratory (PHOL) databases. COVID-19 vaccination data from COVAXON via ICES (as described above). Ontario hospitalization and death rates from the [Ontario COVID-19 Data Tool](#).

Key messages

Vaccination

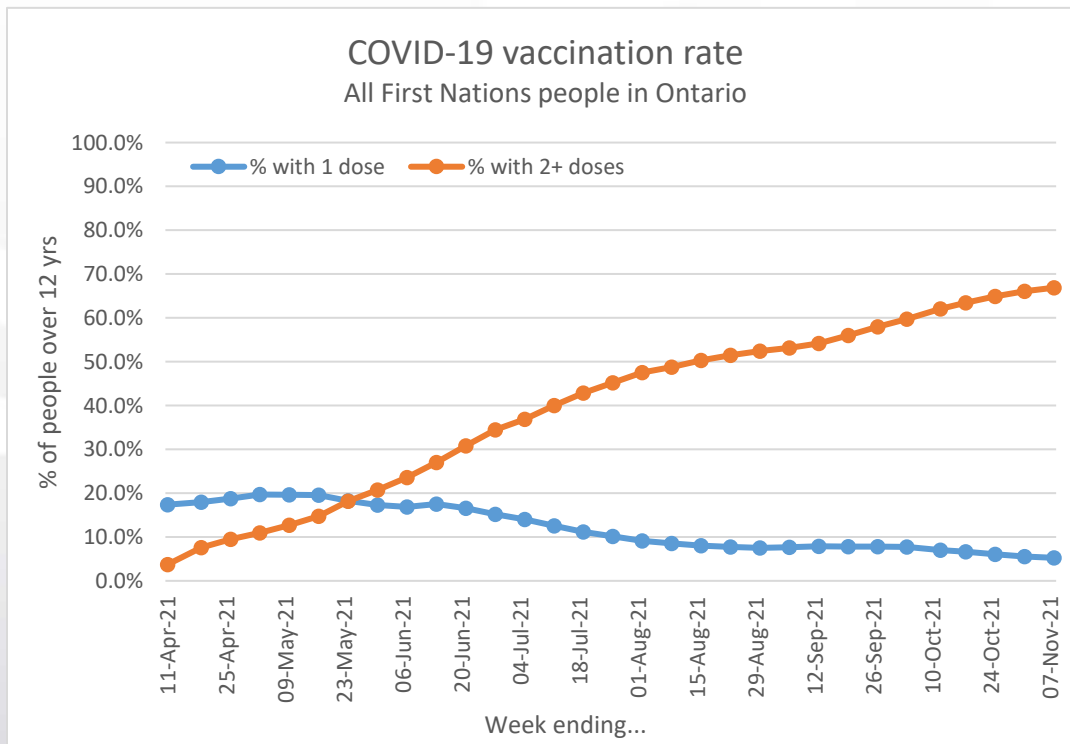
- At least 67% of First Nations people 12 years or older have received 2 or more doses of COVID-19 vaccine as of Nov 8, 2021.
- Vaccination rates are highest in the Central area but increasing everywhere, particularly in **North East**. Rates within First Nations communities are now similar to those outside communities.
- The group with the lowest vaccination rate is people **20-39 years old**.

Testing

- As of Nov 14, 2021, there were 111 new positives, **almost double** the previous week's total of 58. The number of positive results among First Nations to date is 5,746.
- The area with the largest increase in positive results was **Northeast** which had **more than half** of the new positive results this week.
- Hospital admission and death rates remain steady in First Nations and across Ontario.
- Data not shown: Small changes in test volumes were within normal variation in First Nations and across Ontario.

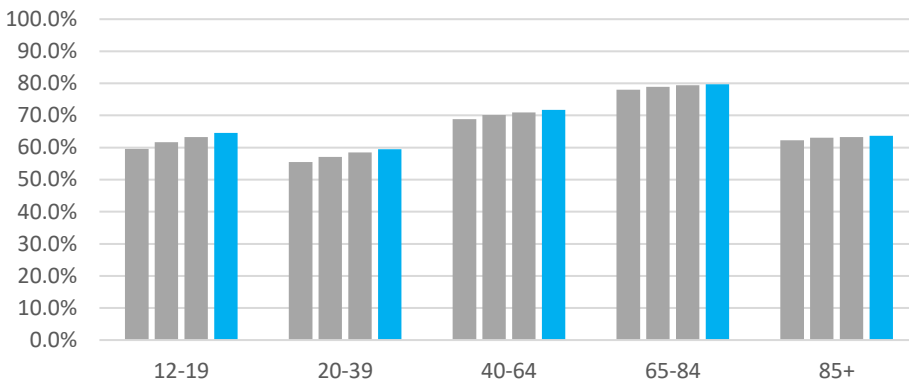
Vaccination rates

COVID-19 vaccination rates are based on data in the Indian Registry System (IRS) and the Ontario provincial vaccine information system COVAXON. They include all First Nations people who are registered in the IRS and live in Ontario, regardless of whether they live within First Nations communities or not. (Exclusions are: people less than 12 years old, people who declined data entry and members of KCA communities and communities who decided against entry into COVAXON).



As of Nov 8, 2021, at least 67% of First Nations people have received 2 or more doses of COVID-19 vaccine.

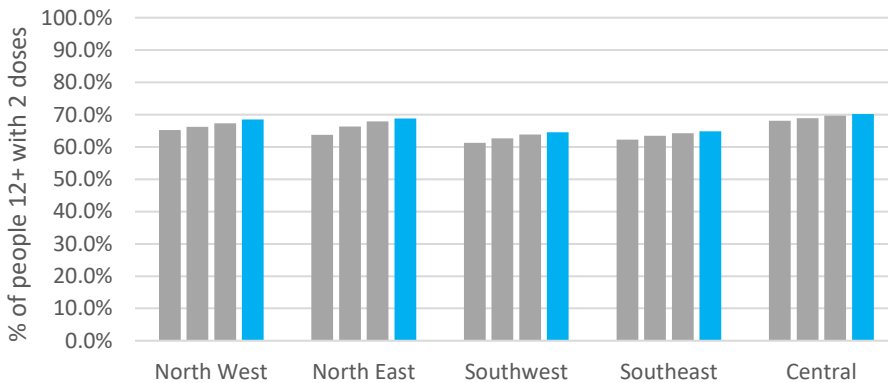
Age-specific COVID-19 vaccination rate % of people with 2 or more doses



The proportion of people who have received 2 or more doses is increasing in all age groups, with the highest proportion among people 65-84 years (80% as of Nov 8, 2021).

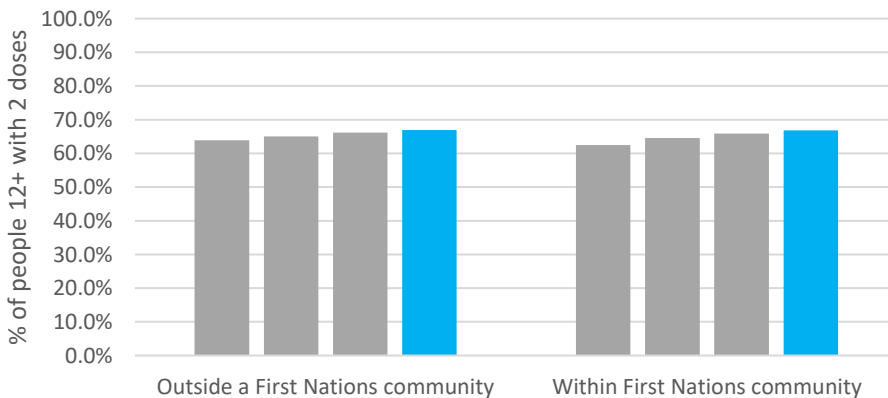
Blue bars show rate for current period, with previous weeks in grey.
Areas are based on Local Health Integration Networks (LHINs). See appendix for details.

Sub-region COVID-19 vaccination rate % of people with 2 or more doses

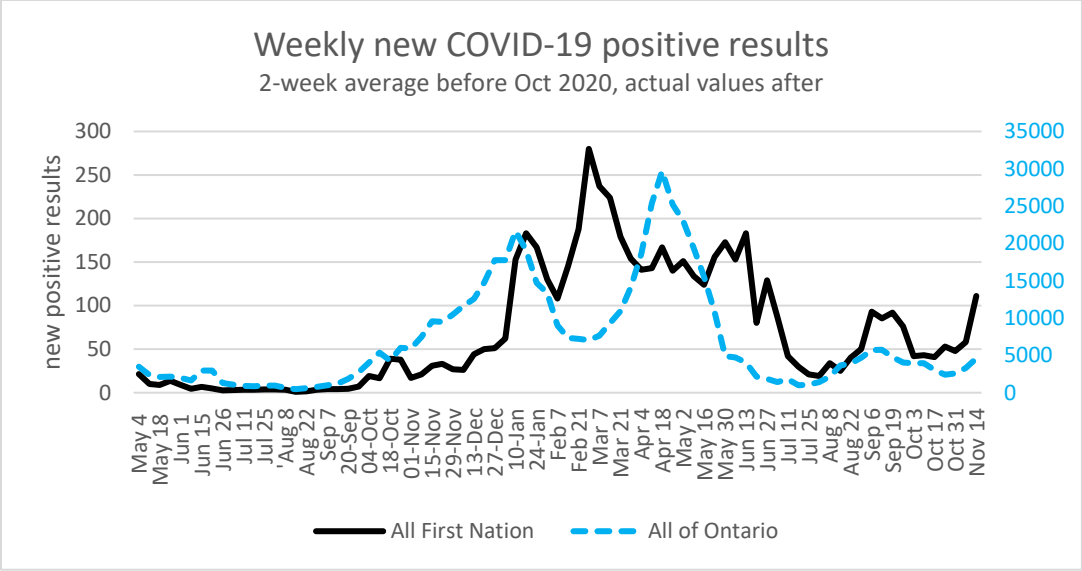


The proportion of people with 2 or more doses is increasing in all areas, with biggest increases recently in the North East.

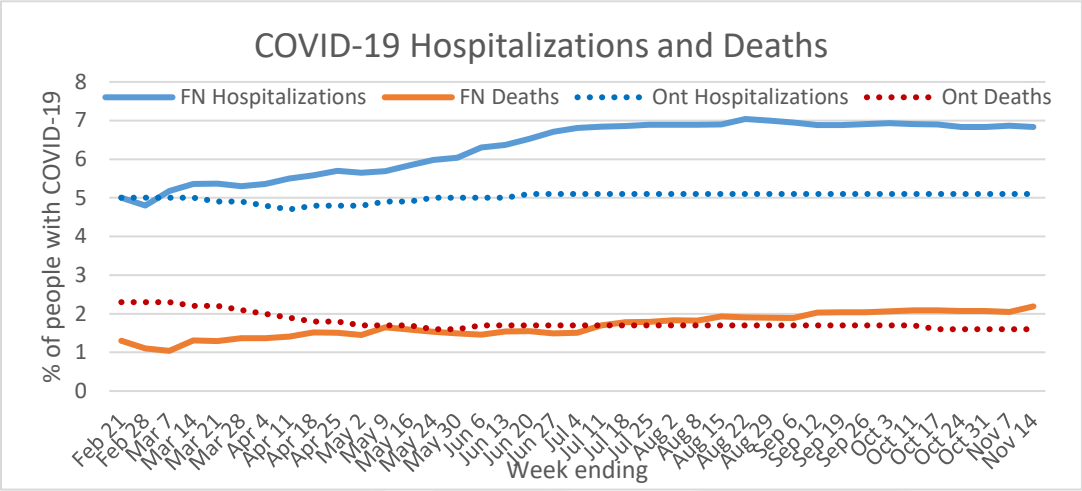
Within/outside community COVID-19 vaccination rate % of people with 2 or more doses



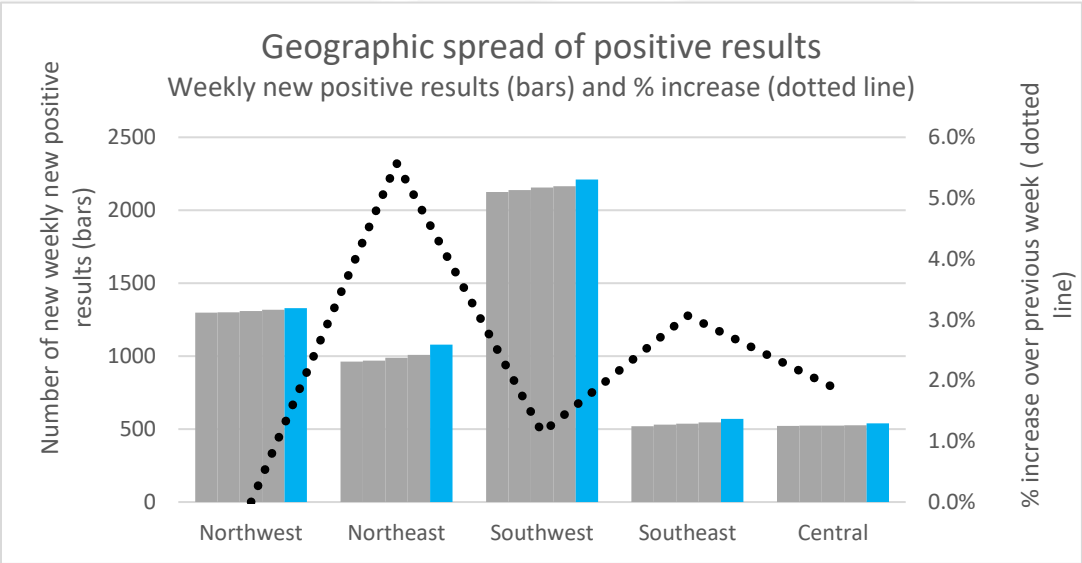
The proportion of people over 12 years with 2 or more doses is increasing for all First Nations people. Vaccination rates are now similar for people living within and outside of First Nations communities.



New COVID-19 positive test results **almost doubled** this week among First Nations. Numbers increased across Ontario too.



Hospital admission and death rates among First Nations and across Ontario remain steady.



The biggest increase in positive results was in the **Northeast**, which had 5.6% more positives than in the previous week.

Appendix:

Intervals in the reported data: Data are as of the week ending on the date shown with the exception of June 20, Jun 26 and Jul 4 for which data for First Nations are for the previous 5, 6 and 8 days, respectively, due to changes in reporting period. Subsequently, data for Ontario and First Nations are reported as rates for 7-day periods, pro-rated as necessary when report intervals are 6 or 8 days, due to the impact of holidays on the reporting process.

Weekly new positive results: Prior to Oct 2020, each week's total is the average of the current and previous week to mask values of less than 5, in compliance with data suppression rules. After that, actual numbers were used because the volume of new results per week was consistently (and unfortunately) more than 5. Data for Jul 18 and Aug 1, 2020 are based on averages of the previous and following weeks of both dates, to correct for known data quality issues.

Boundaries of "areas": Test results of individuals are reported for the LHIN associated with the postal code on the individual's Ontario health card. LHINs included in each "area" for this report are: Northwest: LHIN 14; Northeast: LHIN 13; Southwest: LHINs 1-4; Southeast: LHINs 9-11; Central: LHINs 5-8, 12. Follow this [link](#) to view maps showing LHIN boundaries.

Suppressed data: Data suppression is done at ICES. When data for one category in a series are suppressed, at least one of the results based on these categories must also be suppressed. Hence totals greater than 5 may be suppressed for one or more areas when at least one of the LHINs included in the calculation of area totals has less than 5 cases.